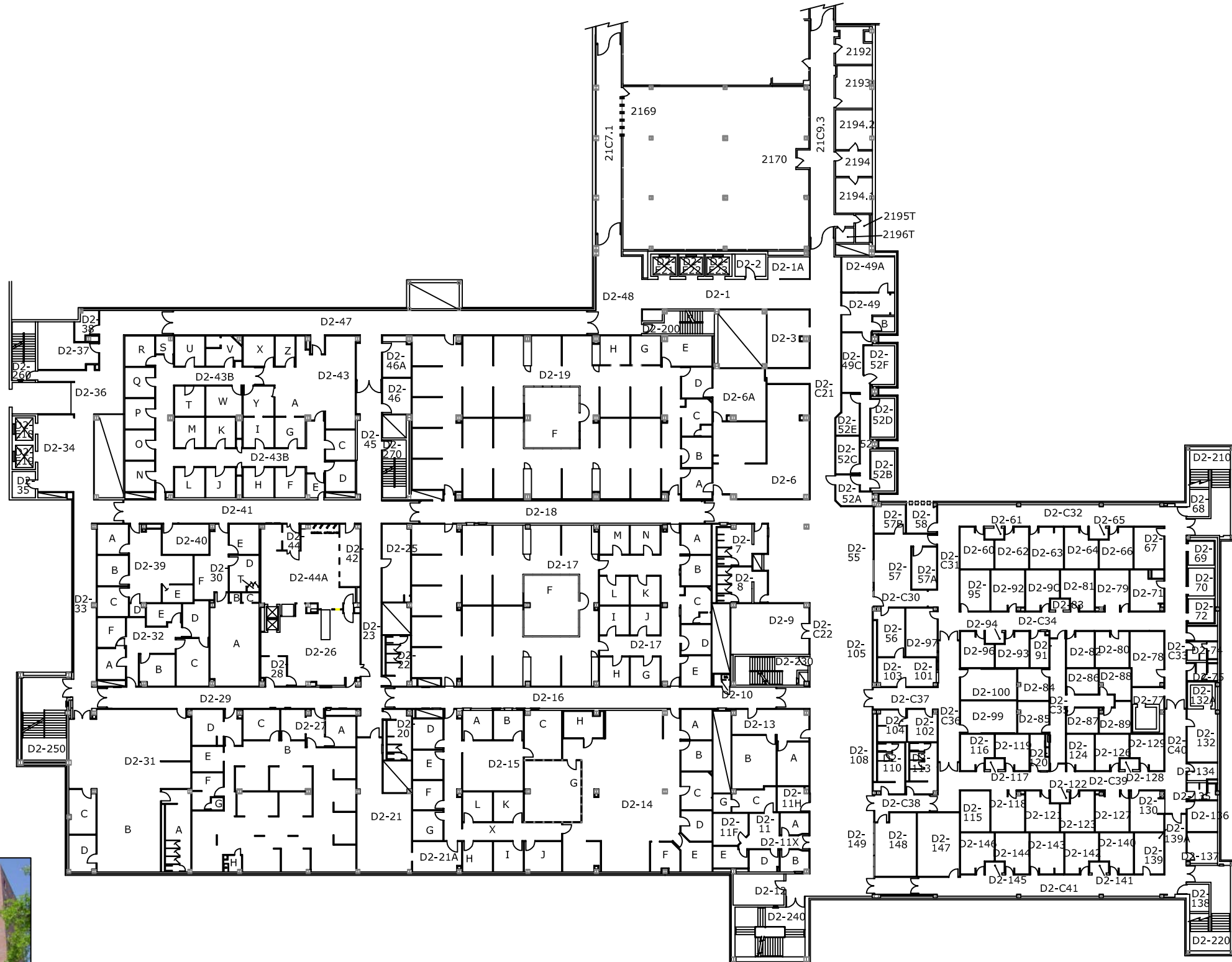


SHANDS TEACHING HOSPITAL

MEDICAL SCIENCE BLDG.



# Dental Science Second Floor Building # 0205

GRID AREA:  
**3C3**  
SCALE  
**1"=40'**



University of Florida  
Business Affairs  
UF Facilities Planning and Construction  
www.facilities.ufl.edu

Volume:  
**1**

232 Stadium  
PO Box 115050  
Gainesville, FL 32611-5050  
Telephone: (352) 273-4000  
Fax: (352) 273-4034

