

University of Florida College of Dentistry

Clinic
1B

Clinic
1A

Building the...

Gator Nation

UFCD 2005 Annual Report

Radiology

Oral
Surgery



UNIVERSITY OF
FLORIDA

The Foundation for The Gator Nation.

Gator Dentistry...

THE Future



Seminole Clinic

UFCD AT A GLANCE

Students	451
Dental	321
Advanced Education	106
Internationally-Educated Dentist Program	24
Faculty (all sites)	185
Staff (all sites)	257
Degree Programs	16
Clinic Locations:	
Gainesville, Jacksonville, Seminole, Hialeah	
Patient Visits	89,954
Operating Budget (FY05)	\$52.7M
Research Funding (FY05)	\$16.8M

Over the past 10 years, every aspect of college operations has
This remarkable growth is reflected by the college's revenues,
in 2005. As the college moves through its fourth decade, we take

2005 ACHIEVEMENTS:

- The college's new, \$4 million teaching and clinical care site on the St. Petersburg College Seminole Campus opened to patients in September of 2005.
- Faculty recruitment efforts in 2005 resulted in 25 new faculty hires—despite a nationwide shortage of dental faculty. This is due, in large part, to the college's strong, nationwide reputation for excellence in dental education and research.
- More than 1,400 applications were received for the 80 openings in the college's entering D.M.D. Class of 2010.
- The college is ranked No. 4 out of 56 dental schools in terms of NIH funding for research in 2005.
- The Class of 2005 achieved a 100 percent first-time pass rate of the Florida Licensure exam.
- One hundred percent of the Class of 2006 passed the NB Part II exam.
- The college's NIH-funded Florida Research Infrastructure Enhancement Plan, spearheaded by the Department of Oral Biology, has helped make faculty scholarship and career development an institutional priority, leading to the goal of developing

Ortho-
dontics

Pediatrics



is Now

experienced dramatic expansion in both size and complexity.
which have doubled from \$26.6 million in 1995 to \$52.7 million
this time to reflect on our successes and challenges.

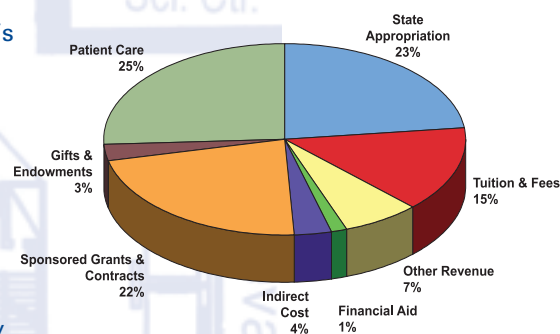
federally-funded, long-term clinical research programs.

- The college created a new Department of Community Dentistry and Behavioral Science in recognition of Florida's growing dental public health needs. This new department has a rich mix of researchers and research interests, adding to the college's portfolio of research and its emphasis on public health.
- Through the Statewide Network for Community Oral Health, the UF College of Dentistry continues to

serve as a dental safety net, providing 10 percent of the state's indigent dental services to Florida's most economically and medically vulnerable residents.

- Digital radiography is installed in all college clinics, leading the college one step closer toward the goal of an electronic dental record. Additionally, cutting-edge cone beam computed tomography is now installed in the college's Gainesville radiology suite, enabling 3-D digital imaging of the whole head and neck.

Sources of Revenue, Fiscal Year 2004-05



Educating for

As the state's only public dental school, the college educates Florida's future dentists and dental specialists through its 16 degree and certificate programs. To date, dentistry at UF has graduated 1,940 dentists. The college admitted its first class of 24 students in 1972 and its most recent class of 82 students in August 2005. Advanced and graduate education at the college has produced more than 794 dental specialists. Typically, more than 90 percent of the college's graduates remain in Florida to practice.

D.M.D. Program. Each year the college admits a new class of about 80 D.M.D. students consisting of individuals who are among the top pre-dental students in the nation. The class entering in 2005 was selected from 1,060 applicants. The stability of the qualifications of the entering class, even while applications continue to increase, reflects the holistic admission process the college uses in selecting students to prepare for a profession in dentistry.

Academic credentials of D.M.D. applicants and enrollees

APPLICANT POOL	1999	2000	2001	2002	2003	2004	2005
AVG TTL GPA	3.19	3.19	3.22	3.23	3.21	3.2	3.23
AVG Science GPA	3.07	3.67	3.08	3.10	3.07	3.07	3.10
DAT Academic AVG	17.25	17.90	14.50	16.70	15.50	16.00	17.00
DAT Psychomotor	16.55	17.20	13.80	16.20	14.60	14.00	16.00
No. of Applicants	788	663	585	634	656	932	1060

APPLICANTS ENROLLED

AVG TTL GPA	3.55	3.48	3.58	3.51	3.44	3.55	3.53
AVG Science GPA	3.49	3.41	3.52	3.42	3.32	3.47	3.45
DAT Academic AVG	18.75	19.00	19.40	19.70	19.20	20.00	19.00
DAT Psychomotor	17.64	18.40	18.10	18.50	17.80	18.00	18.00

D.M.D students' performance on standardized examinations is a benchmark of the quality of our academic programs. The performance of the Class of 2007 on the NBDE – Part I was ranked 11th out of the 56 participating dental school classes. Concurrently, the Class of 2005 achieved a ranking of 11 out of 54 dental schools on its performance on the NBDE – Part II. During 2004-05, a 100 percent pass rate on the Florida State Board Examination was achieved. Mock boards were introduced to the curriculum in 2002 and have resulted in highly successful outcomes in increasing student performance on the Florida State Dental Licensure Exam.



the Future

Student Diversity. The college strives to achieve multicultural diversity representative of Florida's population—40 of this year's entering D.M.D. students are women, and nearly 40 percent of this year's entering class list themselves as ethnic minorities, as compared to less than 20 percent in the class of 2008. Recruiting minority and disadvantaged students into the D.M.D. program continues to be a priority goal for the college's strategic plan.

Diversity of students in the D.M.D. program

	NATIVE AM.		ASIAN		AFRICAN AM.		HISPANIC		WHITE		TOTAL	
Class	M	F	M	F	M	F	M	F	M	F	M	F
2006	0	0	4	6	2	0	7	6	25	26	38	38
2007	0	0	6	11	0	1	4	5	34	21	44	38
2008	0	0	2	5	1	1	4	3	42	26	49	35
2009	1	0	8	7	1	3	6	6	26	24	42	40
Total	1	0	20	29	4	5	21	20	127	97	173	151



Degree programs and enrollment

Degree Program	Students Enrolled
Doctor of Dental Medicine	321
Internationally-Educated Dentist Program 2-yr certificate	24
Advanced education in general dentistry	22
CE Advanced education in general dentistry fellow	1
Endodontics	9
Endodontic Fellows	2
Facial Pain	3
Oral Pathology	2
Oral Surgery	13
Oral Surgery Fellows	7
Graduate Orthodontics	12
Orthodontic CE Fellows	4
Pediatric Dentistry	10
Pediatric Dentistry Fellows	1
Graduate Periodontics	8
Graduate Prosthodontics	7
Veterans Administration General Practice Dentistry	4

Class of 2005 Postdoctorate Plans

2005 Grads	78
Associate Practice	41
Advanced Education in General Dentistry	9
Military	8
General Practice Residency	8
Pedodontics Residency	6
Oral Surgery Residency	5
Orthodontics Residency	5
Periodontics Residency	2
Endodontics Residency	1
Public Health	1

Scholarship Awards 2004-05

Marshall M. and Jeannette Butts DeWitt Scholarship Fund

Dental students with financial need who display academic achievement and motivation are eligible to apply for the scholarship. A total of \$90,000 was awarded to 30 students.

Andrew Abel Dental Scholarship Fund

Dental students who require financial assistance and display excellence in their academic and clinical endeavors are eligible to apply for the scholarship assistance. A total of \$2,400 was awarded to one student.

Krisia and Steve Rhoden Memorial Scholarship Fund

Students in the College of Dentistry, with special consideration to students from the Caribbean nations, including but not limited to Jamaica, are eligible to apply for the Rhoden Scholarship. One student was awarded a total of \$3,100.

William T. and Jackie C. Reid Scholarship in Dentistry Fund

Needy dental students with high scholastic averages are eligible for the Reid Scholarship. One student received an award of \$1,988.

Discovering

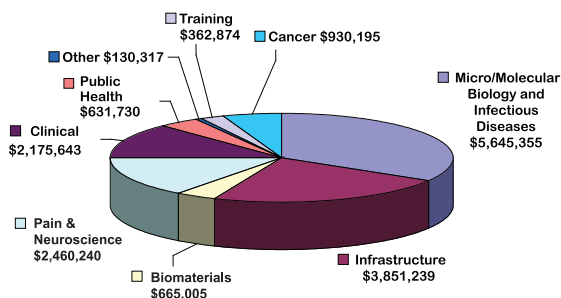
FOR THE FUTURE

The College of Dentistry currently ranks No. 4 among the 56 dental schools in the United States in terms of NIH funding for research. The college is nationally recognized for its oral health research enterprise, emphasizing infectious diseases in dentistry, bone biology, pain and neurosciences, and translational research to improve clinical and dental care. Also flourishing are research efforts in the areas of craniofacial studies, biomaterials, cancer and clinical studies.

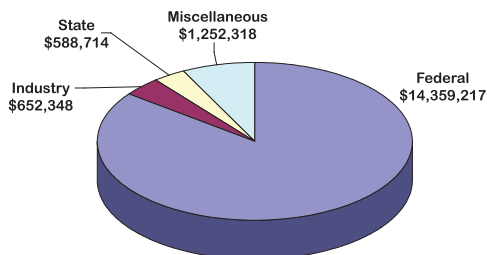
Implementation of the Florida Research Infrastructure Enhancement Plan has greatly enhanced the college's ability to make faculty scholarship and career development an institutional priority. Since the \$2 million National Institute on Dental and Craniofacial Research/National Institutes of Health (NIDCR/NIH) award was made in September 2004, two basic scientists, two clinical/translational research scientists, and one epidemiologist have been recruited as part of the grant implementation. The Pipeline Program, a major component of the plan, which fosters mentored research training for clinical faculty with the goal of competing for independent NIH funding to support long term clinical research programs, currently includes four college faculty members from the departments of oral medicine, oral and maxillofacial pathology, operative dentistry and prosthodontics.

The Dental Practice Based Research Network (DPBRN), is one of three funded nationwide by NIDCR. The 7-year, \$25 million dollar award is expected to fund 16-20 practice-based studies to promote communication, direct research, and enhance education of dentists as well as providing a basis to evaluate quality improvement in dentistry over time. The first of these studies will survey 176 Florida and Georgia dental practitioners on methods used in caries diagnosis, timing of operative intervention and initial and replacement restorations. In studies 2 and 3, 200 dentists from Florida and Georgia will be certified as practitioner investigators to report on patient care. Each of these studies will involve as many as 100 patient/restorative sites per practitioner for a total database of 20,000 restored sites. The University of Florida DPBRN, in conjunction with the University of Alabama at Birmingham, provides coordination and oversight to practitioners in Florida, Georgia, Alabama and Scandinavia as well as Minnesota and Oregon through collaboration with Kaiser Permanente and HealthPartners. For more information, visit www.DentalPBRN.org.

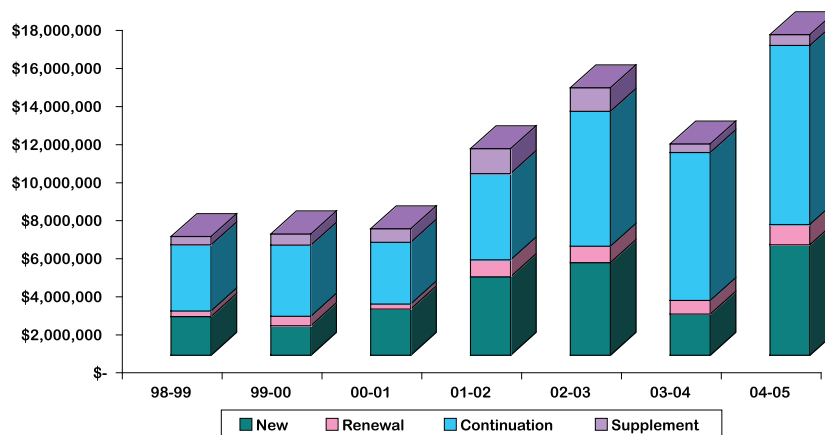
Sponsored Research and Other Funding by Type, Fiscal Year 2005



2005 Awards by Funding Source



Sponsored Funding by Status, Fiscal Years 1998-2005



Faculty Research Awards

PI	Funding as of 2004/2005	Title	PI	Funding as of 2004/2005	Title
Administrative					
Dolan T	\$1,476,239.00	FY 2004 Congressionally Mandated Telehealth Project	Tomar S	\$21,339.00	Enhancing Oral Health Care Use by HIV-Positives
Dolan T	\$8,000.00	Special Board Allocation for Graduate Supplemental Stipends	Robinson B E	\$15,000.00	Gulf Coast Area Health Education Center Program
Dolan T	\$20,000.00	Dental Chair Resource Recovery Fund	Robinson B E	\$10,000.00	North Florida Area Health Education Center Program
Spogetti V	\$93,661.00	Loans for Disadvantaged Students	Robinson B E	\$98,500.00	Suwannee River Area Health Education Center Program
Dental Biomaterials			Oral Biology		
Anusavice K J	\$137,181.00	Clinical Performance of Three-Unit Fixed Partial Dentures Made from a Hot-Pressed Ceramic	Brady L J	\$705,271.00	Membranes of the Dental Pathogen Streptococcus Mutans
Anusavice K J	\$804,201.00	Controlled-Release Sealant to Prevent Secondary Caries	Brady L J	\$1,451,930.00	Immunomodulation by Exogenous Streptococcal Antibody
Anusavice K J	\$2,132,959.00	Ceramic Prosthesis Survival Based on Cares/Life Analysis (Optimized Stress States in Ceramic-Based Restorations-R37)	Brown T	\$1,216,045.00	Oral Immunization with P. Gingivalis Virulence Antigens
Anusavice K J	\$15,000.00	Thermal Shock Resistance of Dental Ceramics	Burne Jr R A	\$129,638.00	Planning Awards for Improvement of Research Infrastructure in U.S. Dental Schools
Soderholm K	\$3,000.00	Internationalizing the Curriculum	Burne Jr R A	\$1,438,770.00	Gene Regulation and Physiology of Streptococcus Mutans
Operative Community Based Public Health			Burne Jr R A	\$1,258,150.00	Molecular Biology of Oral Alkali Production
Clark N	\$650,593.00	Residency Training in General Dentistry and/or Advanced Education	Burne Jr R A	\$4,616,123.00	Genetics and Physiology of Oral Alkali Production
Gordan V	\$5,700.00	Multi-Center Study of Sealing, Refurbishing, and Repair of Resin-Based Composite and Amalgam Restorations	Burne Jr R A	\$2,355,000.00	Enhancing Research Infrastructure and Capacity Building for Dental Schools
Fillimgim R B	\$1,034,213.00	Ethnic Differences in Responses to Painful Stimuli	Chan E K	\$22,612.00	Activation of Innate Immunity by Small Ribonucleoproteins-(Subaward from Medicine, W. Reeves, PI)
Fillimgim R B	\$41,216.00	Ethnic Differences in Responses to Painful Stimuli; Equipment Supplement	Chan E K	\$996,314.00	Novel Proteins Associated with SS-A/Ro in Target Organs
Hastie B	\$252,655.00	Ethnic Differences in Responses to Painful Stimuli; Disability Supplement	Chan E K	\$540,820.00	Golgi Complex Antibodies and Autoantigens
Fillimgim R B			Chan E K	\$261,497.00	Maternal Autoantibodies: Pathogenesis for Neonatal Lupus
Guthridge	\$59,146.00	Ethnic Differences in Responses to Painful Stimuli; Minority Supplement	Handfield M	\$99,041.00	Novel Targets for Diagnostics, Therapeutics and Prophylactic Strategies of Microbial Pathogens
Fillimgim R B	\$1,324,763.00	Sex & Menstrual Cycle Effects on Pain and Analgesia	Handfield M	\$989,557.00	In Vivo Antigen Technology of Aain Ljp
Fillimgim R B	\$288,260.00	Sex & Menstrual Cycle Effects on Pain and Analgesia; Administrative Supplement	Handfield M	\$10,000.00	Characterizing Bacterial Virulence Determinants with Human Microarrays
Fillimgim R B	\$37,776.00	Psychological Stress and Risk of Cardiac Events (Subaward from Med, D. Sheps, PI)	Lamont R J	\$651,071.00	Molecular Aspects of Oral Plaque Formation
Logan H N			Lamont R J	\$727,188.00	P. Gingivalis Interactions with Gingival Epithelial Cells
Gedney J	\$138,832.00	Pre-Existing Affect and Pain Recall: Mediating Factor; Fellowship	Lamont R J	\$245,700.00	DNA Microchips: Detecting Microbes in Oral Cavity Fluids
Logan H N	\$187,695.00	Psychological Distress in Survivors of Head/Neck Cancer	Lamont R J	\$17,104.00	Proteomics of P. Gingivalis Invasion of Epithelial Cells
Mjor I	\$481,981.00	Dental PBRN Network Chair	Lamont R J	\$267,000.00	Intra- and Interspecies Communications in Oral Bacteria
Mjor I	\$61,640.00	Re-Engineering Clinical Dental Research	Magnusson Ni	\$18,000.00	A Multi-Center Randomized, Blinded Study Comparing the Effect of CRX-1191 in Combination with Scaling and Root Planing (SRP) to That of Placebo Plus SRP on Serum C-Reactive Protein (CRP) and Cytokines in Subjects with Severe Periodontitis
Mjor I	\$3,865.00	Residual Funds	Magnusson Ni	\$90,550.00	A Clinical Trial to Compare the Safety and Efficacy of Two Marketed Tooth-Whitening Products
Mjor I	\$18,750.00	Clinical Study of New Tooth Colored Resin Based Composite System of Class I and Class II Restorations	Magnusson N I	\$85,000.00	Evaluation of Systemically Delivered Doxycycline Hyclate (Periostat) Plus Locally Delivered Doxycycline Hyclate 8.5%...
Riley J L	\$534,471.00	Oral Health Disparities: Actions Taken About Pain	Magnusson N I	\$105,065.00	A Clinical Trial to Evaluate the Safety & Efficacy of Two Marketed Tooth Whitening Systems & an Experimental Whitening Dentrice
Riley J L	\$59,146.00	Oral Health Disparities: Actions Taken About Pain- Minority Supplement	Magnusson N I	\$110,500.00	A Nine Month, Multi-Center, Double-Blind, Placebo-Controlled Clinical Trial Evaluating the Effect of Doxycycline Monohydrate Modified-Release Capsules Qd in Combination with Scaling and Root Planing
Riley J L	\$10,000.00	The Effects on Pain Perception of a Second Noxious Stimulus			
Tomar, S	\$394,486.00	Residency Training in General Dentistry and/or Advanced Education			
Tomar S	\$727,500.00	Reducing Oral Cancer Disparities in Florida			
Tomar S	\$15,000.00	Pilot Studies in Bioethical Issues in Oral Cancer			
Tomar S	\$21,677.00	Obesity Prevention in Youth Using a Dental Practice Setting			

PI	Funding as of 2004/2005	Title	PI	Funding as of 2004/2005	Title
Magnusson N I	\$127,080.00	A Clinical Trial to Compare the Safety and Efficacy of a Marketed Tooth-Whitening Product Under Three Different Treatment Regimens	Katz J	\$10,000.00	Antioxidants and Radiotherapy in Oral Cancer Therapy
Magnusson N I	\$108,750.00	A Clinical Trial to Compare the Safety and Efficacy of a Marketed Tooth-Whitening Product and Two Experimental Tooth...	Price D D	\$18,783.76	Characterization of Pain Processing Mechanisms in Irritable Bowel Syndrome
McArthur W P	\$1,302,302.00	National Research Service Award in Oral Biology	Price D D	\$40,800.00	Mechanism of Pain in Patients with Fibromyalgia Syndrome (Subaward from Medicine, R. Staud, PI)
Peck A B	\$117,897.00	M3 Receptor: Diagnostic Marker for Sjogren's Syndrome	Stavropoulos F	\$5,000.00	UFRF Residual
Peck A B	\$1,030,978.00	Exocrine Gland Targeting in Autoimmune Nod Mice	Orthodontics		
Peck A B	\$217,813.00	IL-4 Signaling Pathway Regulation of Sjogren's Syndrome	Dolce C	\$14,200.00	Miscellaneous Donors
Peck A B	\$980,813.00	Genetic Control of Autoimmune Exocrinopathy in Nod Mice	Holliday L S	\$1,196,928.00	Osteoclast Activation in Uremic Bone Disease
Progulske-Fox	\$1,000.00	Residual Funds	Hurst I	\$338,582.00	ARP2/3 Complex and Osteoclast Bone Resorption
Progulske-Fox	\$13,265.00	Oral Immunology/Microbiology Research Annual Meeting	Morris-Wiman	\$396,804.00	Mast Cell Role in Masseter Muscle Repair
Progulske A	\$1,338,601.00	Interactions Between Oral Pathogens and Vascular Cells	Neubert J K	\$405,000.00	Molecular Targeting of the Vanilloid-1 Receptor
Progulske A	\$1,444,360.00	Surface Antigens of Oral Bacteroides Species	Wheeler T T	\$29,633.00	A Phase II Single Center Study in Healthy Subjects Undergoing Orthodontic Procedures to Evaluate the Safety, Tolerability, and Efficacy of Recombinant Human Relaxin Administered by Gingival Injections in Combination with Align Appliances
Progulske A	\$1,052,854.00	In Vivo Induced Antigen Technology for Analysis of Porphyromonas Gingivalis	Wheeler T T	\$276,647.00	Prospective Rndmzd Trial Eval the Design of Attachments for Extrusion, Rotation & Intrusion of Teeth W/ Align Appliances
Walker C B	\$16,875.00	Evaluation of Systemically Delivered Doxycycline Hyclate... Plus Locally Doxycycline Hyclate 8.5%...With 3-Month Debride	Wheeler T T	\$1,414,703.00	Timing of Treatment of Class II Malocclusion in Children
Walker C B	\$33,428.00	A Nine Month, Multi-Center, Double-Blind, Placebo-Controlled Clinical Trial Evaluating the Effect of Doxycycline Monohydrate Modified-Release Capsules Qd in Combination with Scaling and Root Planing	Wheeler T T	\$2,170.00	Miscellaneous Donors
Walker C B	\$824,181.00	Antibiotic Resistance in a Subgingival Biofilm Model	Widmer C	\$1,211,121.00	Nerve-Muscle Interaction During Jaw Muscle Development
Walker C B	\$372,107.00	Low Dose Doxycycline Effects on Osteopenic Bone Loss	Yeziarski R P	\$1,088,641.00	Effects of Excitotoxic Injury on Spinal Sensory Pathways
Walker C B	\$33,429.00	A Clinical Trial to Compare the Safety and Efficacy of a Marketed Tooth-Whitening Product and Two Experimental Tooth...	Yeziarski R P	\$2,250.00	Visceral Pain Research Workshop
Wen Z	\$145,229.00	Luxs-Mediated Quorum Sensing in Streptococcus Mutans	Yeziarski R P	\$4,000.00	Travel Award
Williams W N	\$2,569,718.00	Velopharyngeal Function for Speech After Palatal Surgery	Yeziarski R P	\$8,800.00	CCPR Speaker Series
Williams W N	\$826,659.00	Facial and Dental Arch Growth Following Palatal Surgery	Yeziarski R P	\$5,485.88	Residual Funds - Misc
Williams W N	\$2,000.00	Craniofacial Center Family Net-Work	Yu C	\$10,000.00	The Effects of Gene Silencing of ERK1 for Neuronal Loss and Neuropathic Pain following Excitotoxic Spinal Cord Injury
Williams W N	\$553,213.00	CMS Craniofacial Network	Zuo J	\$17,229.00	Role of PI 3-Kinase P110cx in Osteoclasts
Oral Surgery			Pediatrics		
Caudle R M	\$290,417.00	Target Cholera Toxin for Treatment of Hyperalgesia	Burtner A P	\$600.00	Special Smiles Education Program
Cooper B Y	\$716,884.00	Capsaicin Insensitive Nociceptors of the DRG	Bimstien E	\$10,000.00	The Influence of Taste Sensitivity of Food Intake and Oral Health
Cooper B Y	\$514,175.00	Sensory Consequences of Electromagnetic Pulses Emitted by Laser Induced Plasmas	Catalanotto F	\$10,000.00	The Influence of Taste Sensitivity of Food Intake and Oral Health
Cooper B Y	\$10,000.00	UFRF Misc	Catalanotto F	\$403,122.00	Training in Primary Care Medicine and Dentistry
Gu J	\$312,947.00	Role of Substance P in Central Sensory Processing	Periodontology		
Gu J	\$10,000.00	Neurokinin-1 Receptor Knockout Mice and P2x Receptor Knockout Mice	Horning G M	\$78,860.00	Prospective Eval of Hybrid Vs Non-Hybrid Designed Osseotite Implants in Short Span Fixed Bridge Cases
Gu J	\$99,755.00	"Cold-Sensing Molecules and Neuropathic Pain"	Karpinia K A	\$5,520.00	A One Year Recall of a Clinical Trial to Evaluate the Safety and Efficacy of an Experimental Peroxide Tooth Whitening Strip to a Marketed Paint-On Night Tooth Bleaching Product A
Gu J	\$5,000.00	Journal for Molecular Pain	Karpinia K A	\$21,160.00	A One Year Recall of a Clinical Trial to Evaluate the Safety and Efficacy of an Experimental Peroxide Tooth Bleaching Gel A
Heft M	\$49,034.00	Advanced Postgraduate Program in Clinical Investigation (APPCI)	Prosthodontics		
			Mauderli A	\$660,743.00	Opatial and Temporal Characteristics of Central Pain Sensitization in Chronic Pain Diseases

Serving

FOR THE FUTURE

The College of Dentistry has a multi-faceted service mission encompassing patient care and community outreach and education. Through its Statewide Network for Community Oral Health, the college improves access to dental care for Florida's residents, focusing on vulnerable and indigent populations and special needs patients. Through the network, the college has become one of the largest providers of low-cost dental care in Florida, providing nearly 10 percent of all indigent care to Florida's residents, offering comprehensive state-of-the-art clinical services during more than 89,950 patient visits in fiscal year 2004-2005.

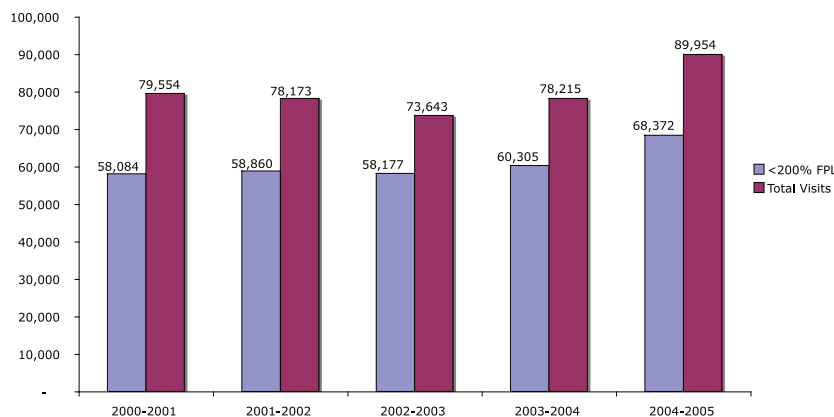


The Statewide Network for Community Oral Health continues to be a unique resource with the goal of providing clinical learning opportunities for dental students and residents while also improving access to dental services to the underserved. The college has expanded the network in 2005 with an educational/clinical partnership with the University Partnership Center on the St. Petersburg College Seminole Campus.

The college's students and faculty also give of themselves during humanitarian service trips at home and abroad. The College of Dentistry sponsored three international educational and service trips to the countries of Dominican Republic and Yucatan, Mexico last December, and Ecuador in March.



Patient Visits to College-owned Clinics



While the Dominican Republic trip was not affiliated with a foreign university, the Ecuador and Yucatan trips built on academic ties with sister institutions in other countries to broaden the educational experience of UF dental students. The college has established ongoing exchanges with Universidad San Francisco de Quito (USFQ) in Quito, Ecuador and Universidad Autónoma de Yucatan Facultad de Odontología (UADY) in Yucatan, Mexico.

USFQ hosted 14 UF dental students early March, pairing them with USFQ students to provide restorative and oral surgery treatment to about 300 needy patients. The December trip to the Dominican Republic included 21 UF dental students who were joined by three private dentists and two dental assistants. The UF mission to Dominica resulted in more than 500 patients, many of who were malnourished children or children with HIV, receiving critical dental treatment. The UF trip to Yucatan, Mexico included two faculty and nine UF dental students who partnered with UADY students to provide treatment to more than 400 children in largely rural and underdeveloped areas.

Building

FOR THE FUTURE

The college's aging physical plant and outdated equipment is one of the college's greatest challenges, but also presents the greatest opportunities. In 2005, the college acquired 6,528 square feet of research space as offices and laboratories within the Dental Sciences Building and 1329 Building occupied by other Health Science Center colleges were returned to dentistry. Most of this space has either been renovated or is in the process of being renovated, but infrastructure problems continue to be an issue.

A footprint for college expansion through the construction of a dental west wing was added to the Campus Master Plan in 2005. Discussions have begun with UF Facilities and Planning and an architectural firm to establish a process for initial visioning and preliminary planning for such a facility. Planning will include developing fundraising strategies to raise money for the new facility during the 7-year University of Florida Capital Campaign, of which the College of Dentistry is committed to raising \$9 million.



UF Trustee Cynthia O'Connell (in blue) and U. S. Rep. C.W. Bill Young cut the ceremonial ribbon signifying the partnership between the UF College of Dentistry and St. Petersburg College with a little help from (left to right) City of Seminole Mayor Dottie Reeder, Dentistry Dean Teresa A. Dolan, SPC President Carl Kuttler Jr., University Partnership Center VP Lars Hafner, SPC Trustee Cecil B. Keene and SPC Provost James Oliver. This \$4-million building project, funding for which was raised through local, state and federal support, opened to patients Sept. 6 and is a 14,000 square-foot, two-story clinic that replaces the college's downtown St. Petersburg dental clinic. This facility more than doubles the college's overall patient care capacity in Pinellas County, with patient visits expected to increase from 7,000 to as many as 20,000 each year.

College Renovations Completed in FY '05

Project	Program	Amount	Source of Funds
Clinic 1B Renovation	Clinical	\$96,546	AEF & PECO funds
Clinic 1A Renovation	Clinical	\$302,808	AEF & PECO funds
File Server Room	IS infrastructure	\$109,080	PECO funds
Dean's Office Entrance	College level	\$20,343	AEF & Foundation
1st Floor Concourse & Donor Recognition Wall	College level	\$68,300	AEF & Foundation
1st Floor Signage	College level	\$5,094	Foundation
Orthodontic Clinic Renovation	Clinical	\$500,000	Foundation
West Concourse Renovation	College level	\$17,786	AEF & General Revenue
Operative Dentistry Research Renovation	Research	\$90,000	College IDC
Chartroom Renovation	Clinical	\$12,245	AEF
Bathroom Renovation	College level	\$30,000	AEF
St. Petersburg College Clinic	Clinical	\$1,241,287	AEF, Foundation & Pinellas County
Elevator Monitors	IS infrastructure	\$26,627	Foundation
IS furniture & IP Phones	IS infrastructure	\$16,818	General Revenue
Admissions Office Renovation	Educ. Infrastructure	\$13,819	General Revenue
Student Affairs Office Renovation	Educ. Infrastructure	\$4,673	General Revenue
Patient Billing Office	Clinical	\$32,000	AEF
Periodontics Main Offices	College level	\$25,968	AEF
Periodontics Resident Area	Clinical	\$47,798	Foundation
Periodontics Lab Space	Research	\$43,000	College IDC
Grand Total:		\$2,704,192	

College Renovation Projects, 2006-2011 as prioritized March 1, 2006.

Project	Estimated cost	Time frame
1. MDL's - renovations and equipment	\$500,000	Summer '06
2. Seminar room, D1-9, renovations and equipment	\$50,000	2006-07
3. Pediatric Dentistry Clinic, renovations and equipment	\$500,000	2006-07
4. Graduate Pediatric Dental Clinic, renovations and equipment	\$750,000	2008-10
5. Graduate Prosthodontics Clinic, renovations and equipment	\$250,000	2008-10
6. Graduate Periodontics Clinic, renovations and equipment	\$750,000	2008-10
7. Renovation of 11th floor. 6000-7500 sq. ft. Contingent on the return of all space to dentistry	\$2,000,000+	2006-08
8. Restrooms throughout the dental tower, renovations	\$1,540,000	2006-11
9. Central Sterilization – replacement of aging equipment	\$750,000	2008-09
10. Dental simulation Laboratory – replacement of simulators and AV	\$900,000	2009-10
Total	\$7,990,000	

Technology acquisitions

The University of Florida College of Dentistry is one of a handful of dental schools in the nation that formally incorporates several state-of-the-art technologies in its dental curriculum and patient care enterprise. These include:

Digital Radiography. Through a \$2-million federal grant, digital radiography has been installed in all the college's clinics, in Gainesville and across the state. The college is now working to integrate digital radiology files with its Quick Recovery enterprise system using MyPax.

CEREC 3D composite milling systems. The college purchased two CEREC 3D machines, which feature computer-assisted design and manufacturing (CAD/CAM) software and self-contained diamond bur milling units to fabricate crowns, onlays and inlays. Operative faculty instructs third- and fourth-year dental students in using the CEREC 3D, resulting in patients having permanent, long-lived composite crowns placed within one visit of two or three hours rather than during two visits of several hours each.

i-CAT cone beam computed tomography. Through an anonymous donation, an i-CAT cone beam CT (CBCT) machine has been purchased and installed in the college's radiology department. CBCT is state-of-the-art digital imaging technology that provides high-definition 3D volumetric and maximum intensity projection (MIP) images of the head and neck with one-tenth the amount of radiation exposure of a typical medical-grade CT scan.

Laser Dentistry. The college has signed an agreement with Biolase Technology, Inc. to place six dental lasers in its preclinical lab and in clinics. UF will be one of the first dental schools in the nation to offer laser dentistry in its clinics and curriculum, and the opportunities for research using dental lasers are exciting.

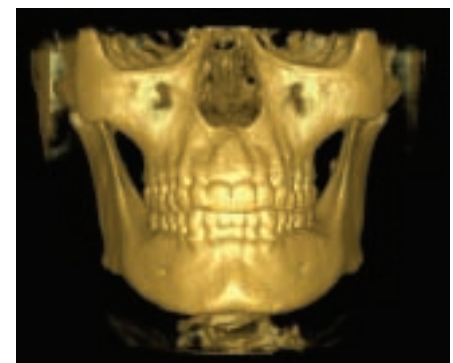
DenX computer assisted implant navigation system. Through donation of equipment, the college's Implant Center acquired a DenX image-guided surgery system. The system uses a complex computerized motion tracking system and digital chart objects to facilitate seamless pre-surgical planning, accurate real-time identification of critical structures during surgery, and precise placement of implants.



DEN-X



CEREC 3D



CONE BEAM CT

Honor Roll

During Fiscal Year 2004-05, the College of Dentistry received \$2,308,887 in gifts and donations. Of this amount \$137,150 was for endowments for the future of the college. In addition, the college received approximately \$225,000 for construction and renovation projects. The remainder was for non-endowed college activities. The college also received \$458,991 in state matching funds.

The College of Dentistry has a capital campaign goal of \$9 million. The major activities for this capital campaign will be raising funds for a new wing for the college or a new clinical facility off-site. In addition, the college will continue to raise funds for the General Dentistry Endowment and renovation and construction projects for departments. A final fundraising goal will be the establishment of additional endowed professorships for the college.

INDIVIDUALS

\$600,000 OR MORE

Dr. L. Clark & B.J. Hodge

\$50,000 - \$99,999

Dr. Geraldine M. Ferris ('79)

\$10,000 - \$24,999

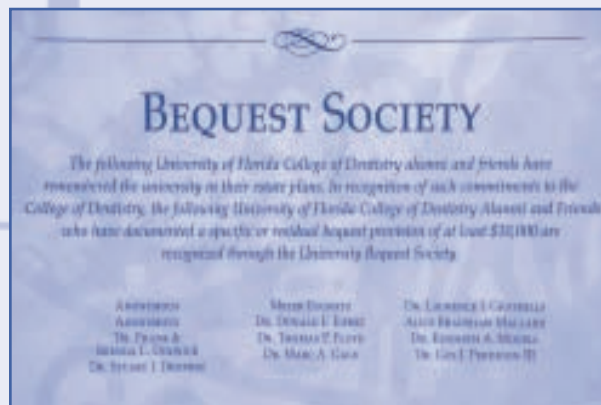
Dr. Rodney S. ('80) &
Dr. Eva F. Ackley ('81)
Dr. Patrice & Dr. John A. Bidwell
Dr. George B. MacMaster (DAE '88)
Dr. Edward S. ('78) &
Linda (Lodato) Mortellaro
Dr. William T. & Jackie C. Reid
Rosa W. Watkins

\$2,000 - \$9,999

Dr. William H. Aippersbach
Dr. Rosario M. Aviles ('98)
Dr. Jeffrey D. Barton (DAE '94)
Dr. Dale D. Batten ('79)
Dr. Marci M. ('83) &
Dr. O. Glenn Beck, Jr. ('79)
Dr. Philip B. Bhaskar ('83)
Dr. Wayne D. Bradley
Dr. Randall C. Brown ('77)
Dr. Randall W. Brown ('84)
Dr. Jeffrey N. Brownstein
Dr. Larry J. Cook ('79)
Charles G. & Velma Cox
Dr. Margherita M. de Moya (DAE '88)
Dr. Angel Diaz-Norrman (DAE '86)
Dr. Calogero Dolce (DAE '93)
Dr. Jeffery Dootson ('80)
Dr. Garland L. S. Forbes
Dr. Marc A. Gale

Dr. Jimmy Glenos ('81)
Dr. Timothy A. Glomb ('93)
Dr. Henry A. (DAE '91) &
Karleen Mackey Gremillion
Dr. Matthew B. Hall
Dr. Margaret S. Hartwig ('88)
Dr. D. Alan ('76) &
Jeanne Lease Hays
Dr. Jeffrey P. Heilig ('81)
Dr. Mary A. Hencinski ('85)
Dr. To-Nguyen T. Hoang ('89)
Dr. Mark R. Holmes ('01)
Dr. James C. ('99) &
Tricia R. Johnson

Dr. Mark A. Mautner ('82)
Dr. Silas E. McAninch ('85)
Dr. Howell C. Morrison ('84)
Dr. Daniel B. ('83) & Dr. Marsha P. Mullett ('83)
Dr. James E. ('79) & Bonnie B. Nabors
Dr. Stephen T. Parker ('83)
Dr. Sonia I. Pena ('80)
Dr. R. R. Reed, Jr.
Dr. Bruce Riggs (DAE '86)
Dr. Raymond L. Rogers, Jr. ('76)
Dr. Charles L. & Dr. Lydia G. Ross
Dr. Kenneth E. Ross ('93)



Dr. Johnny Johnson, Jr. ('83)
Dr. Mark W. Justice ('86)
Dr. Raed S. Kasem
Dr. Gary H. Malowitz
Dr. Barry K. Marcum (DAE '94)
Dr. Michael P. Marfori
Dr. Celia S. Martin ('84)
Donna R. Martin

Dr. Hans R. Salheiser ('87)
Dr. Bruce W. Scarola ('83)
Dr. Barry P. & Ellen G. Setzer
Dr. Martha V. Smyth ('90)
Dr. Michael D. Spencer
Dr. Douglas L. Starkey ('87)
Dr. Tracie C. Starling ('94)
Dr. Patricia M. Tapley ('88)

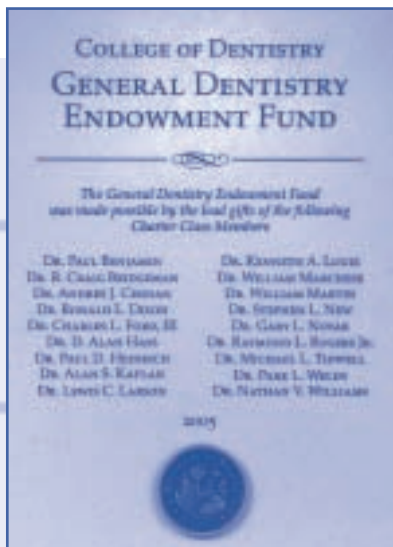


UFCD Philanthropy Center installed in the main lobby of the Dental Sciences Building.

Dr. Jeffrey S. Thompson ('83)
 Dr. Don E. Tillery, Jr. ('84)
 Dr. & Mrs. William H. Truax
 Dr. Rick Waggener
 Dr. Timothy M. ('82) &
 Dr. Janice G. Wahl
 (DAE '83)
 Dr. Gerald K. Weaver ('79)
 Dr. James G. Wilson II ('93)

\$1,000 - \$1,999

Dr. Steven R. Alman ('83)
 Ms. Stephanie L. Baldwin
 Dr. Daniel P. (DAE '89) & Lori
 Barnes
 Dr. Yossi Bar-Zion ('00)
 Dr. Carroll G. Bennett, Jr.
 Dr. Steven P. Bogdanoff ('80)
 Ms. Mary P. Bolton
 Dr. Laban Bontrager ('78)
 Dr. Leandro R. ('00) &
 Patricia C. L. Britto
 Dr. Richard F. Brooks
 Dr. Tommie L. Burchfield, Jr.
 (DAE '86)
 Dr. Mary Anne Butler ('83)
 Dr. Samuel S. Caranante
 Dr. Vincent C. Caranante, Sr.
 Dr. Matilde F. Castellini
 Dr. & Mrs. Lawrence L. Clark, Sr.
 Dr. Tony D. Clark ('89)
 Dr. J. Frank Collins
 Dr. Jorge C. Coro ('79)
 Dr. Lizette A. ('88) &
 Dr. Mark T. Dreyer ('86)
 Dr. Peter T. Esposito (DAE '94)
 Dr. Anne H. & David C. Fergus
 Dr. Dennis E. Fisher ('77)
 Dr. C. R. Fort ('78)
 Dr. Mark H. (DAE '97) &
 Jennifer T. Freeland
 Dr. Gustavo E. Fuentes
 Dr. Brian D. Fuselier (DAE '89)
 Dr. Jay H. Garlitz ('82)
 Dr. Robert D. Gehrig (DAE '81)
 Alex Ghazal
 Dr. William M. Gillenwaters ('86)
 Dr. Gerald G. Goebel ('79)
 Dr. James B. Gray (DAE '81)
 Dr. Ronald H. Hirata (DAE '91)
 Dr. Steven J. Hochfelder ('86)
 Dr. Ronald D. Hucke ('79)
 Dr. Rita Hurst
 Dr. Paul Johnson
 Dr. Michael J. Kania (DAE '91)
 Dr. Alan S. Kaplan ('76)
 Dr. Lee Anne Keough ('97)
 Dr. Loyd J. Kiernan III ('80)
 Dr. Robert W. Ladley ('82)



Dr. Idalia Lastra
 Dr. Robyn B. Lesser Melamud ('00)
 Dr. Barry A. Loughner
 Dr. & Mrs. Parker E. Mahan
 Dr. Bruce D. Manne ('80)
 Dr. Christopher E. Marlette ('81)
 Dr. Leigh A. McIlwain
 Dr. Janna McIntosh (DAE '86)
 Dr. Stacy B. McLendon-Broome ('92)
 & Dr. Craig C. Broome ('92)
 Dr. Esteban ('78) & Maria E. Mulkay
 Dr. R. Daniel & Ann A. Nable
 Dr. Gary L. Novak ('76)
 Dr. Craig L. Oldham ('92)
 Dr. Alan R. Ossi ('99)
 Dr. Robert E. Primosch
 Dr. Heberto M. Salgueiro ('83) &
 Dr. Rita Echevarria-Salgueiro
 Dr. Michael P. Sardzinski ('93)
 Dr. Andrew L. Skigen ('95)
 Dr. Gregory E. & Patricia A. Smith
 Dr. Kirk H. Solberg ('92)
 Dr. Bruce J. Stevens
 Dr. Mark C. Stewart
 Dr. P. Shawn Stopperich
 Dr. Kathy Z. Tyler ('89)
 Dr. Arvind K. Vakani ('03)
 Dr. Jonathan C. Waldron ('77)
 Dr. Timothy T. Wheeler ('85) &
 Dr. Janet D. Pappas ('88)
 Dr. John F. Whitt, Jr.
 Dr. Thomas G. Wilson (DAE '89)
 Dr. David D. Woods (DAE '92)
 Dr. Keith A. Yount (DAE '96)
 Dr. Walter F. Zoller ('80)

\$500 - \$999

Dr. Juan C. Anguita ('92)
 Dr. Kenneth J. Anusavice
 Dr. Jenny L. ('97) &
 Dr. Ryan E. Askeland ('98)
 Dr. Richard L. Balick ('83)
 Dr. Terrence L. Braun ('81)

Dr. Leisa J. Bryan ('89)
 James D. & Dr. Maria C. Camp ('85)
 Dr. Randall B. Caton
 Dr. Mark S. Coican ('81)
 Colonel John R. Embry (DAE '91)
 Dr. David J. Ferlita ('93)
 Dr. Shaun D. Graser ('82)
 Dr. T. L. Green ('78)
 Dr. Jeffrey A. Hameroff
 Mary E. Hardison
 Dr. Cynthia D. Haug ('99)
 Dr. & Mrs. Davis Henderson
 Dr. Lauren G. Hodges ('85)
 Dr. Salvatore R. Indelicato (DAE '89)
 Dr. Margaret Walsh ('90) &
 Dr. Gregory A. Johnston
 Dr. Loyce A. Jones ('84)
 Dr. Michael S. Kanter ('82)
 Dr. Scott F. Kenward ('80)
 Dr. Richard M. ('99) &
 Dr. Jennifer D. Kernagis ('99)
 Dr. Carolyn S. Kerr ('89)
 Dr. Arthur D. King
 Dr. Scott L. Kuhns ('82)
 Dr. Robert A. Lalane II ('79)
 Dr. Martha A. Lawrence (DAE '85)
 Dr. Gerard J. Lemongello, Jr. ('87)
 Dr. William C. ('96) &
 Dr. Dawn L. Martin ('96)
 Dr. Buddy James McAlpin ('78)
 Dr. John T. McCann ('77)
 Dr. Harold F. & Dr. Vicky Menchel
 Dr. Kevin B. Miller ('05)
 Dr. Mark E. Moffitt ('80)
 Dr. Gary C. Nawrocki ('80)
 Dr. Dennis G. Nielson
 Dr. James E. Oxer ('99)
 Dr. J. Carter Perkins, Jr. ('86)

Dr. Stephanie L. Reeder ('03)
 Dr. Enrique Romeu ('83)
 Dr. David C. ('77) &
 Elizabeth G. Sarrett
 Dr. Kenneth A. Schwiebert ('80)
 Dr. Michael Simon ('89)
 Dr. Venita J. Sposetti ('79)
 Dr. Ann L. Steiner ('80)
 Dr. Carol M. Stewart (DAE '88) &
 Dr. Robert E. Bates, Jr.
 Dr. Michael L. Tidwell ('76)
 Dr. Christopher F. Waite ('94)
 Dr. Raymond T. Webber
 Mr. & Mrs. T. Darrell Weldon
 Dr. Abby T. Wilentz ('97)
 Dr. Clark J. Wright ('78)
 Dr. Jess H. Yates ('80)

\$250 - \$499

Dr. Lori A. Aiosa ('97)
 Dr. Dennis P. Allen ('96)
 Dr. Don L. Allen, Sr.
 Dr. Roxzanne J. Amos ('97)
 Dr. Amy F. Anderson ('96)
 Dr. John M. Andrews ('89)
 Dr. Jorge L. Arango
 Dr. Gregory A. Archambault ('83)
 Dr. Daryl E. Askeland ('97)
 Dr. Ronald E. Askeland
 Dr. Joseph M. Barton ('86)
 Dr. John A. Battle III ('83)
 Dr. Ronald A. Baughman
 Dr. Jeffrey L. Beattie ('88)
 Dr. Kenneth R. Begnoche ('96)
 Dr. Ilya Benjamin ('99)
 Dr. Paul L. Benjamin ('76)
 Dr. Ilse W. Berube ('96)
 Dr. Hector Bethart



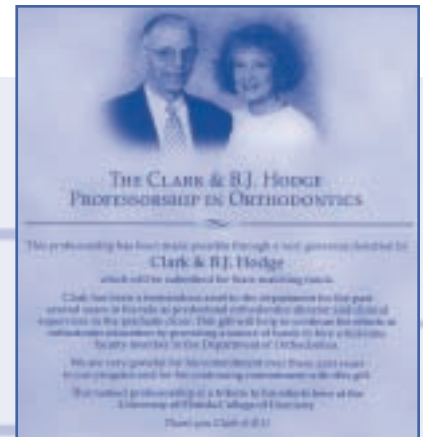
Dean Teresa A. Dolan and Mrs. Marge Atkins with portrait of early UFCD supporter, Louis Atkins, D.D.S.

Honor Roll

Dr. David J. Blue ('85)
 Dr. James E. Boatwright III ('98)
 Dr. Robert E. Borer ('01)
 Dr. Dewey L. Bracy ('86)
 Dr. Daniel J. Brennan ('95)
 Dr. Craig Bridgeman ('76)
 Dr. John J. Brooner
 Dr. Vishtasb Broumand ('97)
 Dr. Richard S. Brown ('83)
 Dr. Steven C. Bryan ('80)
 Dr. Salvatore R. Cabassa ('95)
 Dr. Donald S. Carmona
 Dr. J. Edward Carroll ('85)
 Dr. Francis C. Chaney ('79)
 Dr. Joseph M. Chasko, Jr. ('92)
 Dr. Raymond T. Chu ('83)
 Dr. William K. & Barbara Collett
 Dr. Jeffrey P. & Lee Ellen Cooper
 Dr. Thomas A. Copulos (DAE '92)
 Dr. Alberto G. David, D.M.D. ('87)
 Dr. Peter E. Dawson
 Dr. Raymond A. DellaPorta, Sr.
 Dr. Helena A. DeLuca ('83)
 Dr. Christopher N. Deture ('96)
 Dr. Randall A. Diez ('85)
 Dr. Teresa A. Dolan
 Dr. Laurence E. Drexler ('95)
 Dr. Stuart I. Dropkin ('78)
 Dr. John R. Eifert ('84)
 Dr. Mitchell R. Epstein ('85)
 Dr. Daniel M. Eves ('99)
 Dr. Douglas R. Fabiani ('00)
 Dr. Deborah A. Ferrer ('99)
 Dr. Edward J. Fisher ('97)
 Dr. Ulrich (DAE '94) &
 Kristin Stich Foerster
 Dr. Charles L. Ford III ('76)
 Dr. Gerardo G. Fortunato ('79)

Dr. Beatriz Fraga-Davidson ('83)
 Dr. Delaram A. Galinis
 Dr. Victor V. Gammichia
 Dr. Lewis M. Garrish ('77)
 Dr. Robert D. Gear, Jr. ('92)
 Dr. Elizabeth K. Gesenhues
 (DAE '89)
 Dr. William J. Geyer
 Dr. Mark T. Goodnight ('99)
 Dr. Laurence I. Grayhills ('85)
 Dr. Nicholas J. Grimaudo ('80)
 Dr. Paul A. Guidi ('85)
 Dr. James E. Haddix ('77)
 Dr. Melanie G. S. Halkitis ('83)
 Dr. Charles Hambrook
 Mr. & Mrs. Stanley L. Harris
 Dr. F. Reese Harrison, Jr. ('98)
 Dr. William G. Harrison
 Dr. Lee S. Hauer (DAE '86)
 Dr. Robert B. Hawkins ('79)
 Dr. Malcolm E. Hawley
 Dr. Cecilia W. Hines ('82)
 Dr. Jeffrey W. Holzinger
 Dr. Frederick E. Hosley
 Dr. L.T. Huber
 Dr. Michael D. Insoft ('91)
 Dr. Larry G. James ('82)
 Dr. Eve James-Wilson
 Dr. Kim U. Jernigan ('97)
 Dr. Grady E. Johnson, Jr. ('76)
 Dr. J. C. Kehoe
 Mr. & Mrs. Wayne C. Kelly
 Dr. Kevin L. Kirk ('98)
 Dr. Gerald M. Kluft
 Dr. Richard J. Lamont
 Dr. Sue E. Langham ('80)
 Dr. Thomas C. Lawton
 Dr. J. Michael Layton ('87)

Dr. Rochelle Lopyan ('80)
 Dr. Joseph R. Lowe ('95)
 Dr. James J. Lyons
 Dr. Selena L. Marchan ('93)
 Dr. James E. Martin III ('87)
 Dr. Luis E. Martinez ('85)
 Dr. Michael G. McCorkle ('88)
 Dr. Axel E. McGuffie ('99)
 Dr. Scott G. Milo ('86)
 Dr. Ivar A. Mjor
 Dr. Vikram Mohip
 Dr. Nancy Montgomery-Ware ('90)
 Dr. Ivo Moraguez ('89)
 Dr. Oscar Morejon ('90)
 Dr. Arturo F. Mosquera ('79)
 Dr. Stephen C. Myers ('80)
 Dr. Roger B. Nofsinger
 Dr. James F. Outlaw
 Dr. C. K. Owens
 Dr. Richard A. Parent ('95)
 Dr. Steven D. Perrotti ('99)
 Dr. David M. Plank
 Dr. Douglas N. Pyser ('81)
 Dr. Raj M. Rawal
 Dr. Gregory D. Reddish ('80)
 Dr. V. Keith Riley
 Dr. Twyla J. Roberts ('96)
 Dr. Boyd E. Robinson
 Dr. William F. Robinson
 Dr. Rick L. Root ('89)
 Dr. David W. Rowe II ('95)
 Dr. John E. Russo ('93)
 Dr. W. T. Schwartz II
 Dr. Roderick K. Shaw III
 Dr. Markus Sherry ('78)
 Dr. Wm. B. Shreve
 Dr. Gary J. Snyder ('77)
 Dr. Michael Sofianos ('94)
 Dr. James A. ('85) & Lori C.
 Speckman
 Dr. Michael I. Stewart
 Dr. Henry A. Sweeny, Sr. ('82)
 Dr. Jack R. Taylor ('91)
 Dr. David A. Thaler ('87)
 Mr. & Mrs. Robert M. Thesier
 Dr. E. Donald Thomas III ('87)
 Dr. Robert R. Thousand, Jr. (DAE '81)
 Dr. Andrew J. Tringas ('94)
 Dr. Linda A. Trotter ('87)
 Dr. Alfred H. Underwood, Jr.
 Dr. Julie A. Vavruska ('99)
 Dr. Lilian R. Viera ('90)
 Dr. Phuong-Dung C. Vu ('88)
 Dr. Kevin B. Wallace ('00)
 Dr. Bruce D. Waterman ('82)
 Dr. Sheri S. Watson ('96)
 Dr. Dewitt C. Wilkerson III ('82)
 Dr. David E. Willey ('86)
 Dr. Hopeton G. Williams ('94)
 Dr. Israel Winikor ('86)
 Dr. Lisa A. Yurkiewicz ('95)



\$100 - \$249

Dr. Brian K. Allen
 Dr. Jack A. Amick
 Dr. Simon T. Amir ('03)
 Dr. Harold R. Arthur, Jr. ('02)
 Dr. Charles A. Beck, Jr. (DAE '79)
 Dr. Daren J. Becker ('98)
 Dr. Juan C. Bird ('96)
 Dr. Joseph R. Boulter ('85)
 Dr. David A. Bowles
 Dr. Gerald M. Boza, Jr.
 Dr. Cindy Brayer ('99)
 Dr. Kenneth Brehnan ('79)
 Dr. Teresa K. Brigance ('96)
 Mr. & Mrs. Barry D. Brimacombe
 Dr. Heather K. Burch ('98)
 Dr. Karen A. Burns ('01)
 Dr. Stephen T. Carpenter
 Dr. F. Lucie Casthely ('98)
 Dr. Michele L. Cavendish ('97)
 Dr. Anita Chopra (DAE '95)
 Dr. David A. Cohen ('97)
 Dr. Lee R. Cohen ('01)
 Dr. Brian T. Crosby ('94)
 Mr. William L. Debay
 Dr. Matthew J. Dennis
 Dr. Susan L. Dietrich ('86)
 Ms. Betty J. Divosta
 Dr. Joseph E. Dotson
 Dr. Eric L. Ebuon ('98)
 Dr. Lee Eggatz
 Dr. Michael J. Fernandez ('95)
 Dr. David H. Freeman ('00)
 Dr. Thomas A. Galinis ('96)
 Dr. John V. Gammichia ('95)
 Dr. Jose C. Garcia
 Mr. & Mrs. Frank A. Garner
 Dr. Sean Gasset ('01)
 Dr. Jerome M. Gibson (DAE '91)
 Dr. Edilia Glenski
 Dr. Richard J. Greenspan
 Mr. Patrick H. Gribbin, Jr.
 Ms. Sue Guido
 Dr. Jase R. Hackney ('01)
 Dr. William E. Harriett ('86)
 Dr. Phillip M. Hartgraves (DAE '93)
 Dr. Michael C. Hartley ('99)
 Dr. Michael A. Hess ('01)
 Dr. Angela S. Hilton ('91)

This Honor Roll includes the names of all donors to the UF College of Dentistry from July 1, 2004 to June 30, 2005. If your name is not included and you think it should be, one of the following may be the reason it is not:

- The gift was made before July 1, 2004, (and was recognized in a previous report) or after June 30, 2005, (and it will be recognized in a future Honor Roll).
- You made a pledge instead of a gift and planned to fulfill your commitment after June 30, 2005. (Only actual pledge payments made between July 1, 2004 and June 30, 2005 are listed.)
- A personal gift was made using your company's check or letterhead. In this case, you may be listed in the corporate and organization section of the Honor Roll.
- We made a mistake. In spite of our best efforts, errors and omissions occur. If so, please accept our apologies and notify the UF College of Dentistry Development Office, PO Box 100217, Gainesville, FL. 32610-0217. Call 352-273-5779 or e-mail Cathy Jenkins, UFCD director of development at cjenkins@dental.ufl.edu.

Dr. David T. Holden ('02)
 Dr. Gregory Mason Horning
 Dr. Nancy A. Horton ('90)
 Dr. R. P. Hylton, Jr.
 Dr. Joslyn A. Jenkins ('97)
 Dr. Naresh A. Kalra
 Dr. Elizabeth Keith ('94)
 Dr. Jason A. Kempinski ('02)
 Dr. Ernest A. Lado, Jr.
 Dr. Brett T. Lawton ('03)
 Dr. Alan C. Levin
 Dr. H. Ronald Levin
 Dr. Charles D. Llano
 Dr. Michael J. Mahaffey ('90)
 Dr. Chander P. Malik
 Dr. Richard C. Mariani, Jr.
 Dr. Alfredo D. Martin ('01)
 Dr. Jeremy K. Martin ('02)
 Dr. Elizabeth A. McDade ('78)
 Drs. Sean & Judith McDonnell
 Dr. J. Michael McGilvray
 Dr. James H. McSoley ('98)
 Dr. Robert S. Murrell ('78)
 Dr. Nicholas A. Narducci ('01)
 Dr. M. Paul Nestor
 Dr. Isabell G. Oxford ('96)
 Dr. John H. Perrin ('95)
 Dr. Jon L. Rauch
 Dr. Steven D. Reddick ('84)
 Dr. Hernan M. Rodriguez-Torres ('01)
 Dr. Laura M. Rogers ('94)
 Dr. Elizabeth C. Salvador ('93)
 Dr. Pamela R. Sandow ('86)
 Dr. Randolph E. Schader ('01)
 Dr. Seth J. Shapiro
 Dr. Rose D. Sheats (DAE '93)
 Dr. Alberto Silva ('01)
 Dr. Alan Slootsky
 Dr. Shelby R. Smithey (DAE '84)
 Dr. Eugene H. Spiegel
 Mrs. Dorma J. Stanley
 Dr. Samuel J. Sweeney ('02)
 Dr. Charles D. ('79) &
 Karen S. Thomas
 Ms. Alejandra M. Thompson
 Dr. Mauricio C. Tijerino ('99)
 Mr. Herman D. Tow
 Dr. Herbert J. Towle III
 Dr. Monte R. Tredway ('82)
 Dr. Warren P. Vallerand (DAE '89)
 Dr. Lisa E. Wadsworth ('94)
 Dr. Richard D. Walter ('97)
 Mr. & Mrs. Karl H. Watson
 Dr. Ronald E. Watson
 Dr. Willard L. Watson, Jr. ('82)
 Dr. Cecil S. White, Jr. ('81)
 Robert W. Williams
 Dr. Michael S. Willis ('86)
 Dr. Lisa N. Yarbrough ('98)
 Wayne & Cecilia G. Yemma

Dr. Deborah J. Zimmerman-Corliss ('96)
\$1 - \$99
 Dr. Pamela G. Adams
 Dr. Jeremy M. Albert ('03)
 Dr. Idaigna Alvarez
 Dr. Jorge Amorin
 Ms. Agnes T. Brooker
 Dr. Jacqueline Canizales Valdes ('92)
 Mr. & Mrs. John K. Clark
 Dr. Michael A. Cuddy (DAE '96)
 Dr. Daniel A. Delcastillo ('90)
 Dr. Howard Doppelt ('87)
 Dr. Sara M. Droker ('04)
 Dr. Fernando J. Duarte ('99)
 Dr. Ronald Elinoff
 Mr. & Mrs. Allen Ellis
 Dr. Rebecca A. Faunce ('91)
 Dr. Carlos Fernandez ('79)
 Mr. Michael H. Fischer
 Dr. George E. Garrington
 Dr. Diaa G. Ghabbour ('99)
 Mr. & Mrs. Kenneth Goffe
 Dr. Elena F. Hernandez
 Dr. Liliana J. Hernandez
 Dr. I. Warren Hersch ('80)
 Dr. Timothy K. Hope ('82)
 Dr. Douglas S. Johnson ('82)
 Ms. Marguerite J. Jones
 Dr. Patricia C. Junquera
 Robert S. & Marilyn M. Kairalla
 Dr. Justin J. Katsur ('03)
 Dr. Edward D. Kosakoski ('86)
 Mr. & Mrs. Maurice Lecker
 Dr. Minta W. Lopez-Torres ('03)
 Dr. Ziyad M. Maali ('02)
 Dr. Erika A. Martinez ('96)
 Dr. Barbara J. Megahee ('79)
 Dr. Shelly L. Mixson ('01)
 Dr. James S. Montelaro ('82)
 Dr. Kay W. O'Leary (DAE '90)
 Dr. Stephen B. Page ('79)
 Dr. Neil G. Powell, Sr.
 Dr. Thomas A. Pribisco
 Dr. John R. Raulerson ('04)
 Dr. Juddson R. Reed ('03)
 Dr. Daniel D. Richards, Jr.
 Dr. Sterling L. Ronk
 Dr. Carlos A. Sanchez
 Dr. Luis M. Santamarina ('80)
 Dr. Todd D. Shockley ('01)
 Mr. & Mrs. Robert L. Siemon
 Dr. Stephen M. Silvers ('80)
 Dr. Timothy F. Tiralosi ('86)
 Ms. Natalya Viranovskaya
 Dr. Dinah McCarley Warner ('82)
 Ms. Terri L. Wirth
 Mr. & Mrs. Sean A. Wright
 Mrs. Lyubov G. Yenatska

ORGANIZATIONS

\$200,000 OR MORE

State Endowment Matching Gifts
 State Facility Matching Gifts
 Straumann U.S.A.

\$50,000 - \$99,999

The Lucy Gooding
 Charitable Fdtn. Trust

\$25,000 - \$49,999

Align Technology, Inc.
 Implant Innovations, Inc.

\$10,000 - \$24,999

CollaGenex Pharmaceuticals, Inc.
 Janssen Pharmaceutica Products LP
 Walter Lorenz Surgical, Inc.
 Susan Royal Wurth Foundation, Inc.

\$2,000 - \$9,999

Atlantic Dental, Inc.
 Atrix Laboratories, Inc.
 Brown & Chmielarski
 Captek Precious Chemicals
 USA, Inc.
 Clayton-Johnson, P.A. Trust
 Account
 Colgate-Palmolive Co.
 Endo Pharmaceuticals, Inc.
 Florida Assn. of Orthodontists, Inc.
 Kenneth W. Grader Foundation, Inc.
 Pfizer, Inc.
 Philips Oral Healthcare, Inc.
 Procter & Gamble Co.
 The Smile Train, Inc.
 The Evelyn Grader Fund/
 Community Foundation, Inc.
 Total Quality Networks
 U.F. Dental Guild

\$1,000 - \$1,999

Drs. Caleb King & Richard
 Oliver, Jr.
 Exactech, Inc.
 Gulf Coast Oral & Maxillofacial
 Surgery
 LSU Health Sciences Foundation
 Luitpold Pharmaceuticals, Inc.
 Henry Schein, Inc.

\$500 - \$999

American Dental Assn.
 Bello Dental Center, Inc.
 Carly Thomas & Caryn Alvarado,
 D.D.S.
 Class of 2003 College of Dentistry
 Doctor's Choice Cos., Inc.
 Fetner & Hartigan, Periodontics
 Florida Prosthodontic Assn., Inc.

Ivoclar Vivodent
 Medplex Dental, Inc.
 NovaMin Technology, Inc.
 Oral-Facial & Implant Surgery, P.A.

\$250 - \$499

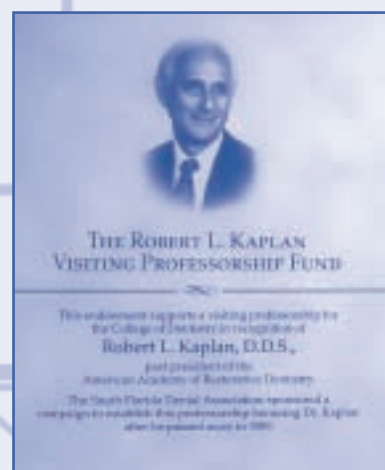
CEOLA-HELO Dental
 Association, Inc.
 Cephalon, Inc.
 Contemporary Periodontics &
 Impl. Dent.
 Hillsborough County Dental Assn.
 Lakewood Ranch Dental Associates
 Martin Orthodontics of
 Gainesville, P.A.

\$100 - \$249

A-dec, Inc.
 Atlantic Coast District Dental
 Association
 Bajuelo Dental Services, Inc.
 Florida Dental Assn.
 Foundation for Global
 Understanding
 G. Hartzell & Son
 Medtronic Foundation
 Washington Mutual Fdtn.

\$1 - \$99

Alvarez & Garcia, P.A.
 Bradenton Eye Clinic
 Family & Cosmetic Dentistry
 of North Florida, Inc.
 Frontier Oral Surgery, P.A.
 Perkins Dentistry, Inc.



University of Florida College of Dentistry

Administrative & Departmental LISTINGS

ADMINISTRATION

Teresa A. Dolan, D.D.S., M.P.H.,
Dean and Professor of
Operative Dentistry
(352) 273-5800

Robert E. Bates, D.D.S., M.S.,
Senior Associate Dean
and Associate Professor
of Prosthodontics
(352) 273-5800

Kenneth J. Anusavice, D.M.D., Ph.D.,
Associate Dean for Research,
Distinguished Professor
of Dental Biomaterials
(352) 392-4351

Samuel B. Low, D.D.S., M.S., M.Ed.,
Associate Dean for Faculty
Practice and Continuing
Education, Professor of
Periodontology
(352) 846-1266

Robert E. Primosch, D.D.S., M.Ed.,
Associate Dean for Education
and Professor of Pediatrics
(352) 273-5953

Boyd Robinson, D.D.S.,
Associate Dean for Clinical Affairs,
Professor of Community Dentistry
Behavioral Sciences
(352) 846-1694

Venita J. Sposetti, D.M.D.,
Assistant Dean for Admissions
and Financial Aid and Associate
Professor of Prosthodontics
(352) 273-5957

Kenneth Tomlinson, B.S.B.A.,
Associate Dean for Administration
(352) 273-5800

Timothy T. Wheeler, D.M.D., Ph.D.,
Assistant Dean for Advanced
and Graduate Education and
Professor and Chairman,
Department of Orthodontics
(352) 273-5690

UFCD DEPARTMENTAL CHAIRS AND PROGRAM DIRECTORS

Community Dentistry and Behavioral Sciences

Scott L. Tomar, D.M.D., Dr.P.H.,
Chair and Program Director
(352) 273-5968

Community Based Dentistry/Advanced Education in General Dentistry Program Directors:

Roberta L. Diehl, D.D.S., Hialeah
(305) 694-5400

Thomas C. Porter, D.M.D., Seminole
(727) 394-6064

Clifford Starr, D.M.D., Jacksonville
(904) 244-7051

Roger Wray, D.D.S., Apopka
(407) 886-9569

Dental Biomaterials

Kenneth J. Anusavice, D.M.D., Ph.D., Chair
(352) 392-4351

Chiayi Shen, Ph.D., Program Director
(352) 392-0508

Endodontics

Frank J. Vertucci, D.M.D., Chair
and Program Director
(352) 273-5440

Operative Dentistry

Paul Blaser, D.D.S., M.S.D., Interim Chair
(352) 273-5842

Internationally-Educated Dentist Program

Nereyda Clark, D.M.D.
Director
352-392-9994

Oral Biology

Robert Burne, Ph.D., Chair
(352) 392-4370

William P. McArthur, Ph.D., Program Director
(352) 846-0778

Oral & Maxillofacial Surgery and Diagnostic Sciences

Marc W. Heft, D.M.D., Ph.D.,
Interim Chair
(352) 392-2673

James G. Green, M.D., D.D.S.,
Program Director for Oral & Maxillofacial
Surgery
(352) 392-2673

Donald M. Cohen, D.M.D., M.S., M.B.A.,
Program Director for Oral Pathology
(352) 392-2505

Orthodontics

Timothy Wheeler, D.M.D., Ph.D.,
Chair and Program Director
(352) 273-5690

Henry A. Gremillion, D.D.S., M.A.G.D.,
Craniofacial Pain and Temporomandibular
Dysfunction Fellowship Program Director
(352) 392-8862

Pediatric Dentistry

Marcio Guelmann, D.D.S.,
Chair
(352) 392-4131

Daniela Silva, D.D.S., M.S.,
Program Director
(352) 392-4131

Periodontology

Ikramuddin Aukhil, B.D.S., M.S.,
Chair
(352) 392-4305

Herbert J. Towle III, D.D.S.,
Program Director
(352) 392-4305

Prosthodontics

A.E. "Buddy" Clark, D.M.D., Ph.D., M.E.,
Chair
(352) 846-2549

Edgar O'Neill, D.D.S., M.S., F.A.C.P.,
Program Director
(352) 392-4231



UNIVERSITY OF
FLORIDA

The Foundation for The Gator Nation.

w w w . d e n t a l . u f l . e d u

University of Florida College of Dentistry • P.O. Box 100405, Gainesville, FL 32610